

FREMANTLE - JETTY REMEDIATION WORKS

LOCATION

Harvest Road
Fremantle, WA

CLIENT

Advantearing Civil Engineers

PROJECT MANAGER

Graham Murphy

DESCRIPTION

The jetty facilities in Fremantle include the existing jetty, one main wharf, a finger jetty and a wall of wave attenuators; there is also mechanical equipment and a crane lift on/near the wharf.

Advantearing Civil Engineers, head contractors for the upgrade and remediation of the jetty and wharf, awarded BUSS the contract to complete the remediation works to the jetty. The work scope included the following:

- Pre-condition inspection survey to confirm location(s) & extent of remediation works;
- Surface preparation and installation of pile wrapping system;
- Cleaning, strengthening and application of protective coatings to steel headstock;
- Breakout and repair delamination of concrete soffit, including CP;
- Clean, via abrasive blasting, and repaint sheet piles;
- Replacement of sacrificial anodes; and
- Testing of concrete patch repair, compression & pull off.

BUSS was awarded additional works which included:

- Blasting & painting of crane;
- Blasting & painting and structural strengthening works at wharf 1; and
- Additional blasting & painting of the sheet metal piles at wharf 3.



Image 1: Jetty crane to be blasted & painted



Image 2: Dust extraction & filter system for blasting & painting

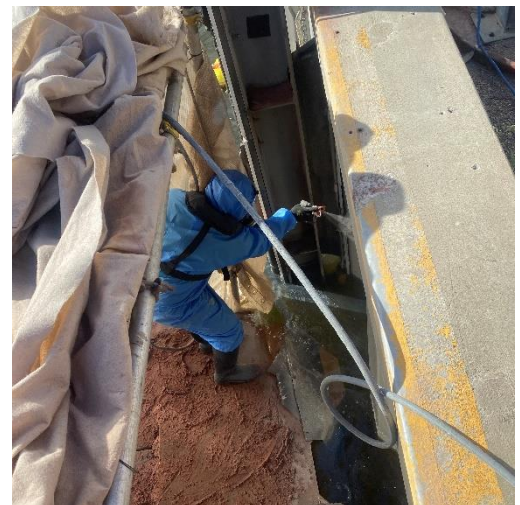


Image 3: Protective coating works to sheet pile wall

POINTS OF INTEREST

- As an environmental precaution, BUSS utilised a dust extraction and filtering system during the blasting and painting works; and
- Works were successfully completed on schedule and within budget.

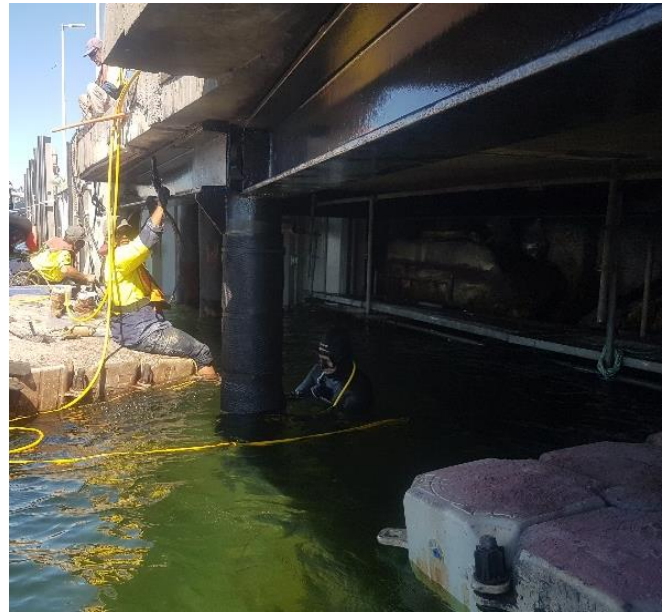


Image 4: Pile wrapping works in progress



Image 5: Corroded wharf piles



Image 6: A pontoon was used to float the pile sleeves under wharf



Image 7: Pile sleeve installation in progress



Image 8: Pile sleeve installation complete

www.buss.com.au

admin@buss.com.au

PO Box 163 FLOREAT WA 6014

08 9444 1732